



PROJECT: _____
 ITEM NUMBER: _____ QTY: _____

4 COMPARTMENT SINK



Model ISU4D-108 shown with (2) RTC - rubber trash chutes

MODELS

'S' SERIES 20-1/2" DEEP

- ISU4S-48 ISU4S-66R ISU4S-96
- ISU4S-60L ISU4S-72 ISU4S-108
- ISU4S-60R ISU4S-72L ISU4S-120
- ISU4S-66 ISU4S-72R
- ISU4S-66L ISU4S-84

'D' SERIES 24" DEEP

- ISU4D-48 ISU4D-66R ISU4D-96
- ISU4D-60L ISU4D-72 ISU4D-108
- ISU4D-60R ISU4D-72L ISU4D-120
- ISU4D-66 ISU4D-72R
- ISU4D-66L ISU4D-84

STANDARD FEATURES

- All Heliarc welded construction
- All 18-Gauge, Type 304 stainless steel
- Attractive high polished bullnose edge-to-front
- 1-5/8" diameter, 16-Gauge stainless steel legs
- Adjustable stainless steel bullet feet
- Heavy duty stainless steel gussets welded to 14-Gauge stainless steel channel supports
- Drainboards have 4" wide 18-Gauge, Type 304, steel support channels and run full length and depth of drainboards
- Drainboard top has continuous corrugation
- Drainboards pitch positively into bowls
- Sink bowls are 18-Gauge, Type 304 stainless steel
- Standard bowl size 10"x 14"x 10" deep with 1-1/2" stainless steel drain and standpipe overflow
- Deck mounted faucet with 12" swing spout

OPTIONS

- CA** Cut Away Apron for Trash Can
- CB** Cabinet Base
- EEF** Electric Eye Faucet
- LS** Lift Out Strainer Basket
- LSS** Left Side Splash
- RP** Removable Panels
- RSS** Right Side Splash
- RS10** Glass Rack Storage for 10" x 20" Racks on legs with cut away apron
- RS20** Glass Rack Storage for 20" x 20" Racks on legs with cut away apron
- RS10C** Glass Rack Storage for 10" x 20" Racks (CB Models)
- RS20C** Glass Rack Storage for 20" x 20" Racks (CB Models)
- RTC** Rubber Trash Chute in Front Apron
- SF** Special Brand Faucet
- TC** Plastic Trash Can
- TR** Towel Rail
- USS** 'S' Series Undershelf
- USD** 'D' Series Undershelf
- M** Modified - Custom

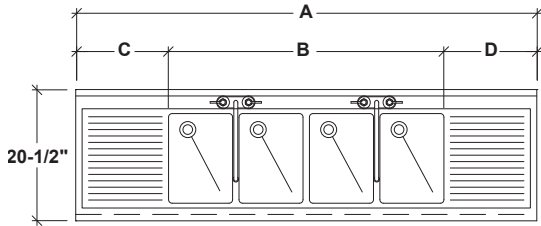


INFINITY KITCHEN PRODUCTS, INC.

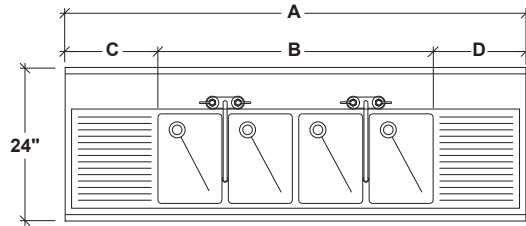
7750 Scout Ave. • Bell Gardens, CA 90201
 Toll Free: (866) 349-0005 • Ph: (562) 806-5771 • Fax: (562) 806-6771
 infinitystainless.com • customerservice@infinitystainless.com

Proudly Made in America

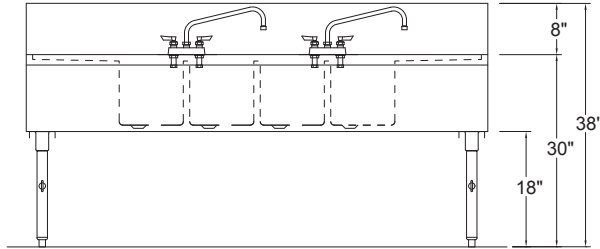
4 COMPARTMENT SINK



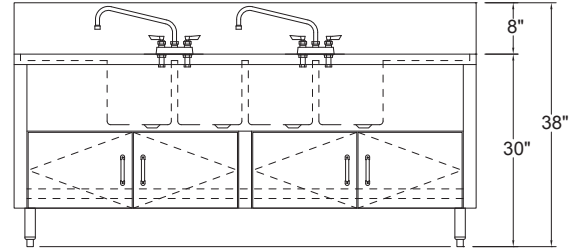
'S' SERIES PLAN VIEW



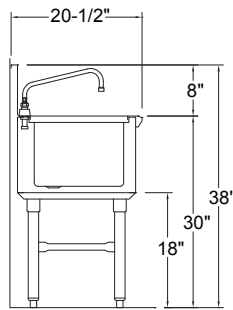
'D' SERIES PLAN VIEW



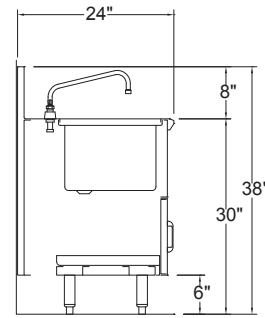
'S' SERIES ELEVATION



'D' SERIES ELEVATION
(WITH OPTIONAL CABINET BASE)



'S' SERIES SECTION



'D' SERIES SECTION
(WITH OPTIONAL CABINET BASE)

'S' & 'D' SERIES 4 COMPARTMENT SINKS WITH 10" x 14" x 10" BOWLS

'S' MODEL NO.	'D' MODEL NO.	A	B	C	D	DRAINBOARD SIDE	'S' WEIGHT	'D' WEIGHT
ISU4S-48	ISU4D-48	48"	43"	2-1/2"	2-1/2"	N/A	130	140
ISU4S-60L	ISU4D-60L	60"	43"	15-1/4"	1-3/4"	LEFT	150	160
ISU4S-60R	ISU4D-60R	60"	43"	1-3/4"	15-1/4"	RIGHT	150	160
ISU4S-66	ISU4D-66	66"	43"	11-1/2"	11-1/2"	LEFT & RIGHT	165	175
ISU4S-66L	ISU4D-66L	66"	43"	21-1/4"	1-3/4"	LEFT	165	175
ISU4S-66R	ISU4D-66R	66"	43"	1-3/4"	21-1/4"	RIGHT	165	175
ISU4S-72	ISU4D-72	72"	43"	14-1/2"	14-1/2"	LEFT & RIGHT	175	185
ISU4S-72L	ISU4D-72L	72"	43"	27-1/4"	1-3/4"	LEFT	175	185
ISU4S-72R	ISU4D-72R	72"	43"	1-3/4"	27-1/4"	RIGHT	175	185
ISU4S-84	ISU4D-84	84"	43"	20-1/2"	20-1/2"	LEFT & RIGHT	190	200
ISU4S-96	ISU4D-96	96"	43"	26-1/2"	26-1/2"	LEFT & RIGHT	220	230
ISU4S-108	ISU4D-108	108"	43"	32-1/2"	32-1/2"	LEFT & RIGHT	250	260
ISU4S-120	ISU4D-120	120"	43"	38-1/2"	38-1/2"	LEFT & RIGHT	275	285

UTILITIES		
COLD WATER	HOT WATER	DRAIN
2 x 1/2"	2 x 1/2"	4 x 1-1/2"

Proudly Made in America