

Model IPRR-2D-RC-LR-CL

32" PLATE SHELF WITH DOORS

**PROJECT:** \_\_\_\_\_

**ITEM NUMBER:** \_\_\_\_\_ **QTY:** \_\_\_\_\_

## 32" PLATE SHELF WITH DOORS

### MODELS

#### REMOTE UNITS

- IPRR-1D       IPRR-2D       IPRR-3D

#### SELF-CONTAINED UNITS

- IPRS-1D       IPRS-2D       IPRS-3D

### STANDARD FEATURES

- All Heli-arc welded construction
- All 18 gauge type 304 stainless steel interior and exterior
- CFC-Free "shot-in-place" insulation
- Easy clean 3/8" radius interior corners
- Polypropylene breaker strip is foamed-locked in-place
- High compression magnetic vinyl door and gasket
- Heavy duty, self closing, stainless steel hinged door
- Door actuated interior lights
- Pre-wired electrical conduit is internally installed within inner and outer walls
- Blower coil with expansion valve, thermostat and solenoid valves (on remote units)
- Self-contained units supplied with compressor compartment with condensing unit, condensate expansion pan, cord and plug
- Heavy duty stainless steel night cover
- Patent pending, air cooled pan rail
- One stainless steel wire shelf per section

### MODEL CONFIGURATION

Example: **IPRS-2D-RC-LR**



<b>1</b>	<b>RR</b> = Remote <b>RS</b> = Self-Contained
<b>2</b>	<b>1D</b> = One Door (One Section) <b>2D</b> = Two Door (Two Sections) <b>3D</b> = Three Door (Three Sections)
<b>3</b>	(On Self-Contained Units) <b>LC</b> = Condensing Compartment on Left Side <b>RC</b> = Condensing Compartment on Right Side
<b>4</b>	(Door Hinged Starting on the Left) <b>L</b> = Right Hinged <b>R</b> = Left Hinged

### OPTIONS

- CL** 6" High S/S Adjustable Legs
- CS4** 4" Heavy Duty Casters
- CS6** 6" Heavy Duty Casters
- DT** Dual Temp
- F** Freezer
- M** Modified - Custom

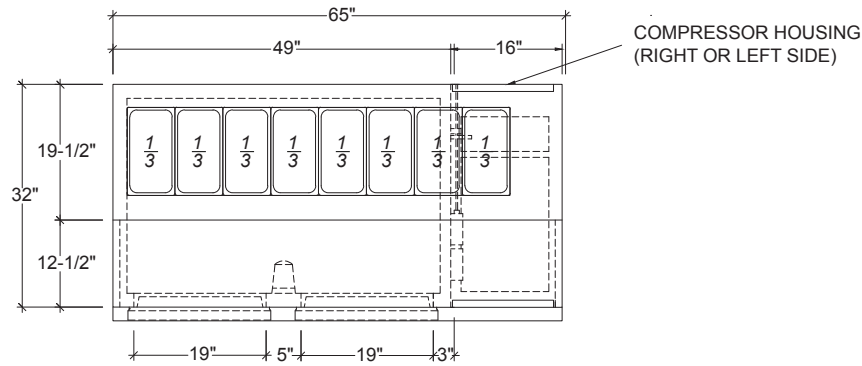


### INFINITY KITCHEN PRODUCTS, INC.

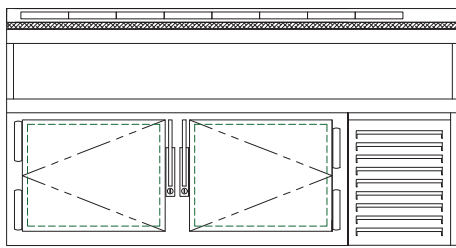
7750 Scout Ave. • Bell Gardens, CA 90201  
 Toll Free: (855) 737-4688 • Ph: (562) 806-5771 • Fax: (562) 806-6771  
 infinitystainless.com • customerservice@infinitystainless.com

Proudly Made in America

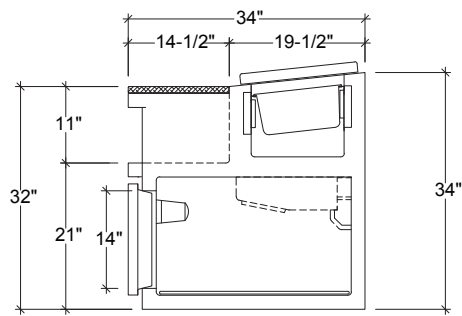
# 32" PLATE SHELF WITH DOORS



PLAN VIEW



ELEVATION



SECTION

MODEL SHOWN: IPRS-2D-RC-LR

## REMOTE UNITS

MODEL	LENGTH	VOLTS	TOTAL AMPS	MIN. CIR. BRACKET	PHASE	MAX CIR. BRACKET	BTU'S	WEIGHT
IPRR-1D	25"	115v	1.7	2.1A	1ph	15A	1187	265
IPRR-2D	49"	115v	3.0	3.8A	1ph	15A	2479	345
IPRR-3D	73"	115v	4.7	6.0A	1ph	15A	3725	400

## SELF-CONTAINED UNITS

MODEL	LENGTH	H.P	VOLTS	TOTAL AMPS	MIN. CIR. BRACKET	PHASE	MAX CIR. BRACKET	BTU'S	WEIGHT
IPRS-1D	41"	1/3 HP	115v	8.8	11.0A	1ph	15A	1712	490
IPRS-2D	65"	1/3 HP+	115v	12.3	15.4A	1ph	20A	3000	590
IPRS-3D	89"	1/2 HP	115v	14.7	18.4A	1ph	20A	4250	635

### INFINITY KITCHEN PRODUCTS, INC.

7750 Scout Ave. • Bell Gardens, CA 90201  
 Toll Free: (855) 737-4688 • Ph: (562) 806-5771 • Fax: (562) 806-6771  
 infinitystainless.com • customerservice@infinitystainless.com

Proudly Made  
 in America