



Model shown: IRRH-2D-LR-ST

30" COUNTER HIGH WITH DOORS

**PROJECT:** \_\_\_\_\_

**ITEM NUMBER:** \_\_\_\_\_ **QTY:** \_\_\_\_\_

## 30" COUNTER HIGH WITH DOORS

### MODELS

#### REMOTE UNITS

- IRRH-1D       IRRH-2D       IRRH-3D

#### SELF-CONTAINED UNITS

- IRSH-1D       IRSH-2D       IRSH-3D

### MODEL CONFIGURATION

Example: **IRRH-2D-SSD-LR-LC**



### STANDARD FEATURES

- All Heliarc welded construction
- All 18-Gauge, Type 304 stainless steel interior and exterior
- Easy clean 3/8" radius interior corners
- CFC-Free "shot-in-place" insulation
- Polypropylene breaker strip is foamed-locked in-place
- High compression magnetic vinyl door and gasket
- Heavy duty, self closing hinged door(s) with polished heavy duty door pulls
- Two stainless steel wire shelves per section
- Pre-wired electrical conduit is internally installed within inner and outer walls
- Blower coil with expansion valve, thermostat and solenoid valves (on remote units)
- Self-contained units supplied with compressor compartment with condensing unit, condensate expansion pan, cord and plug

<b>1</b>	<b>RH</b> = Remote <b>SH</b> = Self-Contained
<b>2</b>	<b>1D</b> = One Door (One Section) <b>2D</b> = Two Doors (Two Sections) <b>3D</b> = Three Doors (Three Sections) <b>4D</b> = Four Doors (Four Sections)
<b>3</b>	(On Self-Contained Units) <b>LC</b> = Condensing Compartment on Left Side <b>RC</b> = Condensing Compartment on Right Side
<b>4</b>	(Door Hinged Starting on the Left) <b>L</b> = Left Hinged <b>R</b> = Right Hinged

### OPTIONS

- CL** 6" High S/S Adjustable Legs
- CR** Patent Pending Air Cooled Pan Rail
- CS4** 4" Heavy Duty Casters
- CS6** 6" Heavy Duty Casters
- DT** Dual Temp Freezer
- F** Freezer
- KR** Kick Rail
- ST** Stainless Steel Top
- M** Modified - Custom

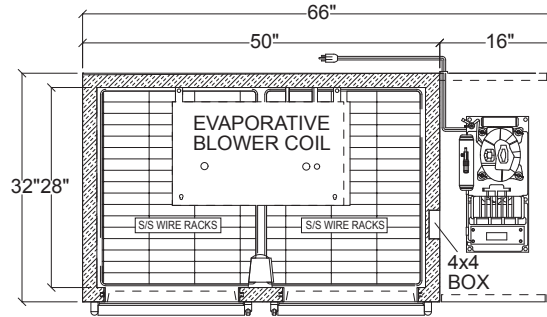


### INFINITY KITCHEN PRODUCTS, INC.

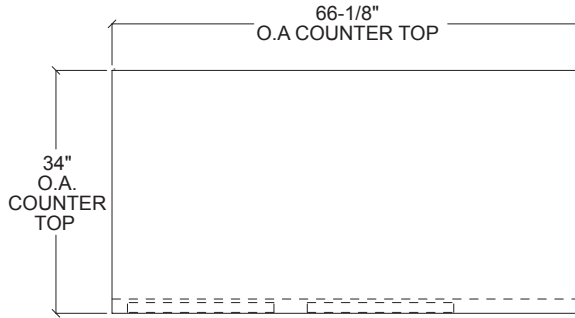
7750 Scout Ave. • Bell Gardens, CA 90201  
 Toll Free: (866) 349-0005 • Ph: (562) 806-5771 • Fax: (562) 806-6771  
 infinitystainless.com • customerservice@infinitystainless.com

*Proudly Made in America*

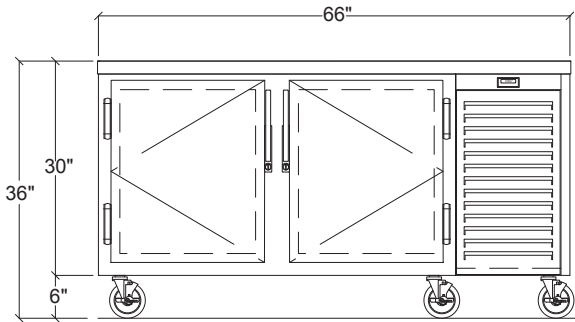
# 30" COUNTER HIGH WITH DOORS



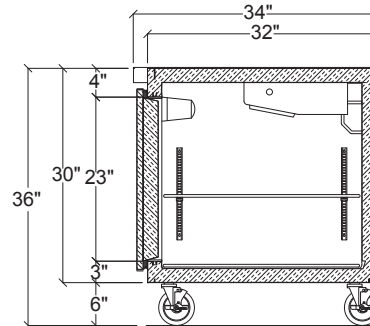
**PLAN VIEW**



**PLAN VIEW**



**ELEVATION**



**SECTION**

**MODEL SHOWN: IRSH-2D-ST-CS6**

## REMOTE UNITS

MODEL	LENGTH	VOLTS	TOTAL AMPS	MIN. CIR. AMPS	PHASE	MAX CIR. AMPS	BTU'S	WEIGHT
IRRH-1D	25"	115v	1.7	2.1A	1ph	15A	656	175
IRRH-2D	48"	115v	2.9	3.6A	1ph	15A	1375	340
IRRH-3D	72"	115v	4.5	5.6A	1ph	15A	2218	450

## SELF-CONTAINED UNITS

MODEL	LENGTH	H.P	VOLTS	TOTAL AMPS	MIN. CIR. AMPS	PHASE	MAX CIR. AMPS	BTU'S	WEIGHT
IRSH-1D	41"	1/3 HP	115v	8.6	10.8A	1ph	15A	656	295
IRSH-2D	64"	1/3 HP	115v	9.8	12.3A	1ph	15A	1375	465
IRSH-3D	88"	1/3 HP	115v	11.4	14.3A	1ph	15A	2218	605

### INFINITY KITCHEN PRODUCTS, INC.

7750 Scout Ave. • Bell Gardens, CA 90201  
 Toll Free: (866) 349-0005 • Ph: (562) 806-5771 • Fax: (562) 806-6771  
 infinitystainless.com • customerservice@infinitystainless.com

*Proudly Made  
in America*