



Model IRSH-1-03-RC-ST-CS6

30" COUNTER HIGH WITH DRAWERS

PROJECT: _____

ITEM NUMBER: _____ **QTY:** _____

30" COUNTER HIGH WITH DRAWERS

MODELS

REMOTE UNITS

- IRRH-1-02 IRRH-2-04 IRRH-3-06
 IRRH-1-03 IRRH-2-06 IRRH-3-09

SELF-CONTAINED UNITS

- IRSH-1-02 IRSH-2-04 IRSH-3-06
 IRSH-1-03 IRSH-2-06 IRSH-3-09

STANDARD FEATURES

- All Heliarc welded construction
- All 18-Gauge, Type 304 stainless steel interior and exterior
- Easy clean 3/8" radius interior corners
- CFC-Free "shot-in-place" insulation
- Polypropylene breaker strip is foamed-locked in-place
- High compression magnetic vinyl door and gasket
- Drawers each accommodates two full size pans side-by-side
- Pre-wired electrical conduit is internally installed within inner and outer walls
- Blower coil with expansion valve, thermostat and solenoid valves (on remote units)
- Self-contained units supplied with compressor compartment with condensing unit, condensate expansion pan, cord and plug
- 14-Gauge, stainless steel drawer track system with 2" skate wheels

MODEL CONFIGURATION

Example: **IRSH-1-03-RC**

IR - - -

1 2 3 4

1	RH = Remote SH = Self-Contained
2	1 = One Section (Two or Three Drawers) 2 = Two Sections (Four or Six Drawers) 3 = Three Sections (Six or Nine Drawers)
3	02 = Two Drawers (One Section) 03 = Three Drawers (One Section) 04 = Four Drawers (Two Sections) 06 = Six Drawers (Two or Three Sections) 09 = Nine Drawers (Three Sections)
4	(On Self-Contained Units) LC = Condensing Compartment on Left Side RC = Condensing Compartment on Right Side

OPTIONS

- CL** 6" High S/S Adjustable Legs **F** Freezer
 CS4 4" Heavy Duty Casters **KR** Kick Rail
 CS6 6" Heavy Duty Casters **ST** Stainless Steel Top
 CR Patent Pending Air Cooled Pan Rail **M** Modified - Custom
 DT Dual Temp

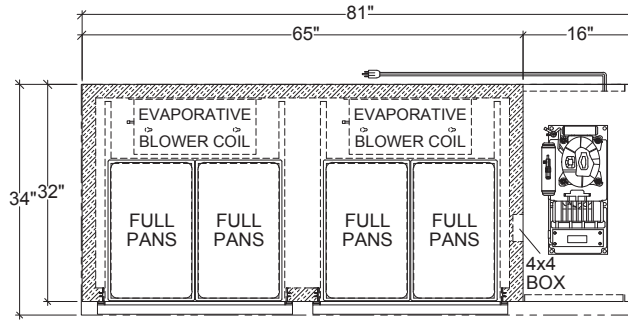


INFINITY KITCHEN PRODUCTS, INC.

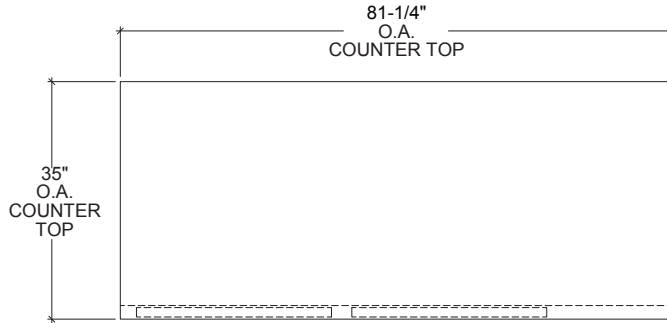
7750 Scout Ave. • Bell Gardens, CA 90201
 Toll Free: (866) 349-0005 • Ph: (562) 806-5771 • Fax: (562) 806-6771
 infinitystainless.com • customerservice@infinitystainless.com

Proudly Made in America

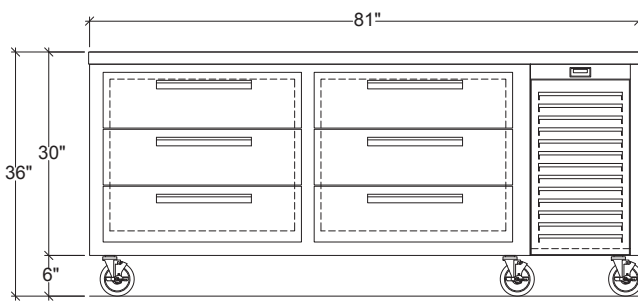
30" COUNTER HIGH WITH DRAWERS



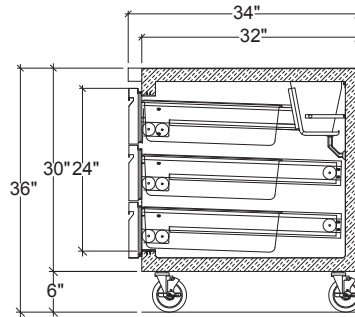
PLAN VIEW



PLAN VIEW



ELEVATION



SECTION

MODEL SHOWN: IRSH-2-06-RC-ST-CS6

NOTE: 6" Deep Full Size Pan (On Two Drawer Units) and 4" Deep Full Size Pan (On Three Drawer Units)

REMOTE UNITS

MODEL	LENGTH	VOLTS	TOTAL AMPS	MIN. CIRC. AMPS	PHASE	MAX CIRC. AMPS	BTU'S	WEIGHT
IRRH-1-02	33-1/4"	115v	2.1	2.6A	1ph	15A	906	265
IRRH-1-03	33-1/4"	115v	2.1	2.6A	1ph	15A	906	275
IRRH-2-04	65"	115v	4.2	5.3A	1ph	15A	1906	345
IRRH-2-06	65"	115v	4.2	5.3A	1ph	15A	1906	360
IRRH-3-06	92"	115v	6.4	8.0A	1ph	15A	2750	425
IRRH-3-09	92"	115v	6.4	8.0A	1ph	15A	2750	440

SELF-CONTAINED UNITS

MODEL	LENGTH	H.P.	VOLTS	TOTAL AMPS	MIN. CIRC. AMPS	PHASE	MAX CIRC. AMPS	BTU'S	WEIGHT
IRSH-1-02	49-1/4"	1/3	115v	9.1	11.4A	1ph	15A	906	325
IRSH-1-03	49-1/4"	1/3	115v	9.1	11.4A	1ph	15A	906	335
IRSH-2-04	81"	1/3	115v	11.3	14.4A	1ph	15A	1906	405
IRSH-2-06	81"	1/3	115v	11.3	14.4A	1ph	15A	1906	425
IRSH-3-06	108"	1/3+	115v	13.5	16.6A	1ph	20A	2750	490
IRSH-3-09	108"	1/3+	115v	13.5	16.6A	1ph	20A	2750	505