



Model IRRL-3-02-2D-RR

**PROJECT:** \_\_\_\_\_

**ITEM NUMBER:** \_\_\_\_\_ **QTY:** \_\_\_\_\_

## 19" LOW HEIGHT COMBOS

### MODELS

#### REMOTE

- IRRL-2-02-1D  
  IRRL-2-1D-02  
  IRRL-3-02-2D  
 IRRL-3-2D-02  
  IRRL-3-04-1D  
  IRRL-3-1D-04

#### SELF-CONTAINED UNITS

- IRSL-2-02-1D  
  IRSL-2-1D-02  
  IRSL-3-02-2D  
 IRSL-3-2D-02  
  IRSL-3-04-1D  
  IRSL-3-1D-04

### STANDARD FEATURES

- All Heli-arc welded construction
- All 18 gauge type 304 stainless steel interior and exterior
- CFC-Free "shot-in-place" insulation
- Easy clean 3/8" radius interior corners
- Polypropylene breaker strip is foamed-locked in-place
- High compression non-magnetic vinyl door/drawer gasket
- Flush front drawer-pull (built-into-the-face) is centered eliminating wracking of drawer
- Drawers each accommodates two 6" deep, full size pans, side-by-side
- Heavy duty, self closing hinged door(s) with heavy duty latch
- Pre-wired electrical conduit is internally installed within inner and outer walls
- Blower coil with expansion valve, thermostat and solenoid valves (on remote units)
- Self-contained units supplied with compressor compartment with condensing unit, condensate expansion pan, cord and plug
- Exclusive 14 gauge stainless steel drawer track system with 2" skate wheels
- Stainless steel adjustable wire shelves

### MODEL CONFIGURATION

Example: **IRRL-3-02-2D-RR**



<b>1</b>	<b>RL</b> = Remote <b>SL</b> = Self-Contained
<b>2</b>	<b>2</b> = Two Section <b>3</b> = Three Section
<b>3</b>	(Starting on the Left) <b>1</b> = 1 Door <b>2</b> = 2 Door
<b>4</b>	(Starting on the Left) <b>02</b> = Two Drawer <b>04</b> = Four Drawer
<b>5</b>	(Door Hinged Starting on the Left) <b>L</b> = Right Hinged <b>R</b> = Left Hinged
<b>6</b>	(On Self-Contained Units) <b>LC</b> = Condensing Compartment on Left Side <b>RC</b> = Condensing Compartment on Right Side

### OPTIONS

- CL** 6" High S/S Adjustable Legs  
 **CS4** 4" Heavy Duty Casters  
 **CS6** 6" Heavy Duty Casters  
 **DT** Dual Temp  
 **F** Freezer  
 **M** Modified - Custom  
 **SM** S/S Top Marine All Around  
 **ST** Stainless Steel Top

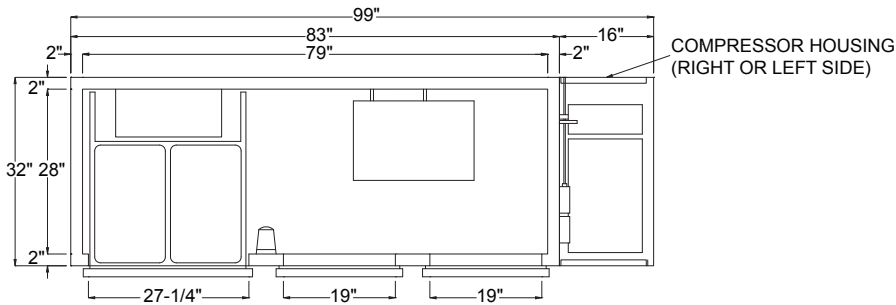


### INFINITY KITCHEN PRODUCTS, INC.

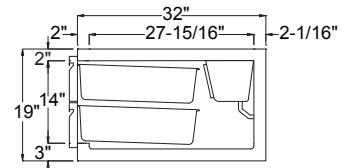
7750 Scout Ave. • Bell Gardens, CA 90201  
 Toll Free: (855) 737-4688 • Ph: (562) 806-5771 • Fax: (562) 806-6771  
 infinitystainless.com • customerservice@infinitystainless.com

Proudly Made in America

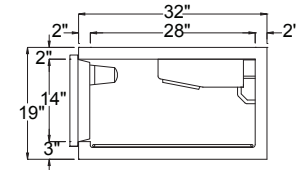
# 19" LOW HEIGHT COMBOS



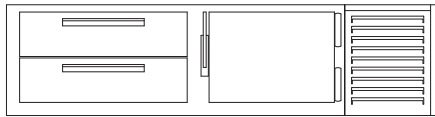
**PLAN VIEW**  
**MODEL SHOWN: IRSL-3-02-2D**



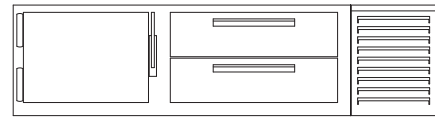
**DRAWER SECTION**



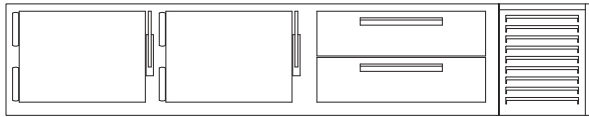
**DOOR SECTION**



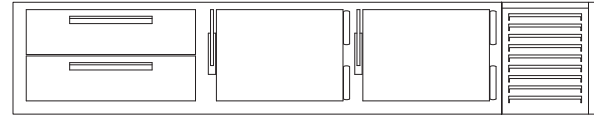
**ELEVATION**  
**MODEL SHOWN: IRSL-2-02-1D**



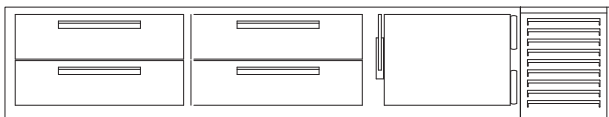
**ELEVATION**  
**MODEL SHOWN: IRSL-2-1D-02**



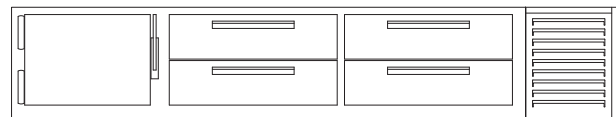
**ELEVATION**  
**MODEL SHOWN: IRSL-3-2D-02**



**ELEVATION**  
**MODEL SHOWN: IRSL-3-02-2D**



**ELEVATION**  
**MODEL SHOWN: IRSL-3-04-1D**



**ELEVATION**  
**MODEL SHOWN: IRSL-3-1D-04**

## REMOTE UNITS

MODEL	DRAWERS	DOORS	LENGTH	VOLTS	AMPS	PHASE	BTU'S	WEIGHT
IRRL-2-02-1D	2	1	58"	115v	1.3	1ph	875	455
IRRL-2-1D-02	2	1	58"	115v	1.3	1ph	875	720
IRRL-3-02-2D	2	2	83"	115v	3.5	1ph	1390	695
IRRL-3-2D-02	2	2	83"	115v	3.5	1ph	1390	995
IRRL-3-04-1D	4	1	88"	115v	3.5	1ph	1500	1040
IRRL-3-1D-04	4	1	88"	115v	3.5	1ph	1500	1120

## SELF-CONTAINED UNITS

MODEL	DRAWERS	DOORS	LENGTH	H.P	VOLTS	AMPS	PHASE	BTU'S	WEIGHT
IRSL-2-02-1D	2	1	74"	1/3 HP	115v	9.3	1ph	875	630
IRSL-2-1D-02	2	1	74"	1/3 HP	115v	9.3	1ph	875	900
IRSL-3-02-2D	2	2	99"	1/3 HP	115v	10.3	1ph	1390	870
IRSL-3-2D-02	2	2	99"	1/3 HP	115v	10.3	1ph	1390	1190
IRSL-3-04-1D	4	1	104"	1/2 HP	115v	10.7	1ph	1500	1235
IRSL-3-1D-04	4	1	104"	1/2 HP	115v	10.7	1ph	1500	1280

## INFINITY KITCHEN PRODUCTS, INC.

7750 Scout Ave. • Bell Gardens, CA 90201  
Toll Free: (855) 737-4688 • Ph: (562) 806-5771 • Fax: (562) 806-6771  
infinitystainless.com • customerservice@infinitystainless.com

*Proudly Made  
in America*