



Model IRRH-3-03-2D

30" COUNTER HIGH COMBOS

PROJECT: _____

ITEM NUMBER: _____ **QTY:** _____

30" COUNTER HIGH COMBOS

MODELS

REMOTE

- IRRH-2-02-1D IRRH-3-02-2D IRRH-3-04-1D
- IRRH-2-03-1D IRRH-3-03-2D IRRH-3-06-1D
- IRRH-2-1D-02 IRRH-3-2D-02 IRRH-3-1D-04
- IRRH-2-1D-03 IRRH-3-2D-03 IRRH-3-1D-06

SELF CONTAINED UNITS

- IRSH-2-02-1D IRSH-3-02-2D IRSH-3-04-1D
- IRSH-2-03-1D IRSH-3-03-2D IRSH-3-06-1D
- IRSH-2-1D-02 IRSH-3-2D-02 IRSH-3-1D-04
- IRSH-2-1D-03 IRSH-3-2D-03 IRSH-3-1D-06

STANDARD FEATURES

- All Heli-arc welded construction
- All 18 gauge type 304 stainless steel interior and exterior
- CFC-Free "shot-in-place" insulation
- Easy clean 3/8" radius interior corners
- Polypropylene breaker strip is foamed-locked in-place
- High compression non-magnetic vinyl door/drawer gasket
- Flush front drawer-pull (built-into-the-face) is centered eliminating wracking of drawer
- Drawers each accommodates two full size pans side-by-side
- Heavy duty, self closing hinged door(s) with heavy duty latch
- Pre-wired electrical conduit is internally installed within inner and outer walls
- Blower coil with expansion valve, thermostat and solenoid valves (on remote units)
- Exclusive 14 gauge stainless steel drawer track system with 2" skate wheels
- Two Stainless steel adjustable wire shelves per door section

MODEL CONFIGURATION

Example: **IRRH-3-03-2D**

IR - - - - -

1
 2
 3
 4
 5
 6

1	RH = Remote SH = Self-Contained
2	2 = Two Section 3 = Three Section
3	(Starting on the Left) 1 = 1 Door 2 = 2 Door
4	(Starting on the Left) 02 = Two Drawer 03 = Three Drawer 04 = Four Drawer 06 = Six Drawer
5	(Door Hinged Starting on the Left) L = Right Hinged R = Left Hinged
6	(On Self-Contained Units) LC = Condensing Compartment on Left Side RC = Condensing Compartment on Right Side

OPTIONS

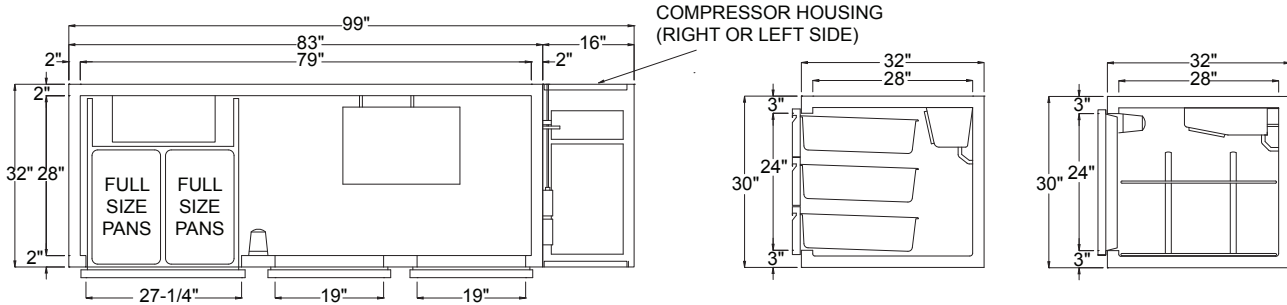
- CL** 6" High S/S Adjustable Legs
- CR** Patent Pending Air Cooled Pan Rail
- CS4** 4" Heavy Duty Casters
- CS6** 6" Heavy Duty Casters
- DT** Dual Temp
- F** Freezer
- GD** Glass Doors
- KR** Kick Rail
- M** Modified - Custom
- ST** S/S Top



INFINITY KITCHEN PRODUCTS, INC. *Proudly Made in America*

7750 Scout Ave. • Bell Gardens, CA 90201
 Toll Free: (855) 737-4688 • Ph: (562) 806-5771 • Fax: (562) 806-6771
 infinitystainless.com • customerservice@infinitystainless.com

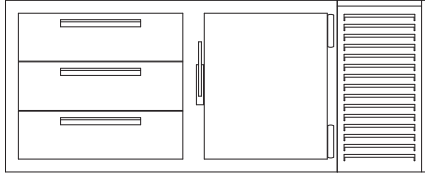
30" COUNTER HIGH COMBOS



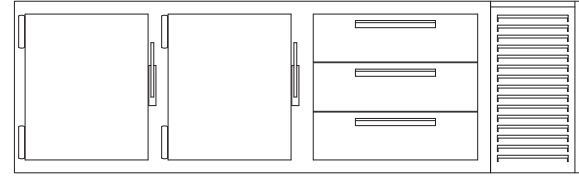
PLAN VIEW
MODEL SHOWN: IRSH-3-03-2D

SECTION

SECTION



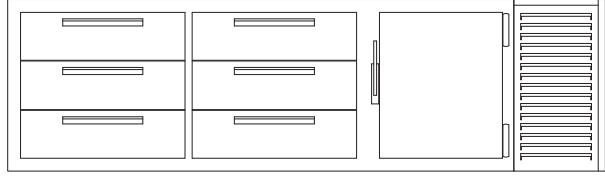
ELEVATION
MODEL SHOWN: IRSH-2-03-1D



ELEVATION
MODEL SHOWN: IRSH-3-2D-03

NOTE:
6" Deep Full Size Pan
(On Two Drawer Units)

4" Deep Full Size Pan
(On Three Drawer Units)



ELEVATION
MODEL SHOWN: IRSH-3-06-1D

REMOTE UNITS								
MODEL	DRAWERS	DOORS	LENGTH	VOLTS	AMPS	PHASE	BTU'S	WEIGHT
IRRH-2-02-1D	2	1	58"	115v	1.3	1ph	1300	500
IRRH-2-03-1D	3	1	58"	115v	1.3	1ph	1300	500
IRRH-2-1D-02	2	1	58"	115v	1.3	1ph	1300	500
IRRH-2-1D-03	1	3	58"	115v	1.3	1ph	1300	500
IRRH-3-02-2D	2	2	83"	115v	2.3	1ph	1300	700
IRRH-3-03-2D	3	2	83"	115v	2.3	1ph	1300	700
IRRH-3-2D-02	2	2	83"	115v	2.3	1ph	1700	700
IRRH-3-2D-03	3	2	83"	115v	2.3	1ph	1700	700
IRRH-3-04-1D	4	1	88"	115v	2.3	1ph	2000	1000
IRRH-3-06-1D	6	1	88"	115v	2.3	1ph	2000	1000
IRRH-3-1D-04	4	1	88"	115v	1.9	1ph	2000	1000
IRRH-3-1D-06	6	1	88"	115v	1.9	1ph	2000	1000

SELF CONTAINED UNITS									
MODEL	DRAWERS	DOORS	LENGTH	H.P	VOLTS	AMPS	PHASE	BTU'S	WEIGHT
IRSH-2-02-1D	2	1	74"	1/3 HP	115v	9.3	1ph	1300	700
IRSH-2-03-1D	3	1	74"	1/3 HP	115v	9.3	1ph	1300	700
IRSH-2-1D-02	2	1	74"	1/3 HP	115v	9.3	1ph	1300	700
IRSH-2-1D-03	3	1	74"	1/3 HP	115v	9.3	1ph	1300	700
IRSH-3-02-2D	2	2	99"	1/3 HP	115v	10.3	1ph	1300	900
IRSH-3-03-2D	3	2	99"	1/3 HP	115v	10.3	1ph	1300	900
IRSH-3-2D-02	2	2	99"	1/3 HP	115v	10.3	1ph	1700	900
IRSH-3-2D-03	3	2	99"	1/3 HP	115v	10.3	1ph	1700	900
IRSH-3-04-1D	4	1	104"	1/2 HP	115v	13.2	1ph	2000	1200
IRSH-3-06-1D	6	1	104"	1/2 HP	115v	13.2	1ph	2000	1200
IRSH-3-1D-04	4	1	104"	1/2 HP	115v	12.7	1ph	2000	1200
IRRH-3-1D-06	6	1	104"	1/2 HP	115v	13.2	1ph	2000	1200