

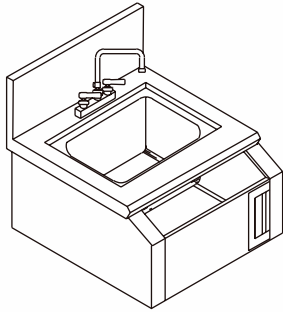
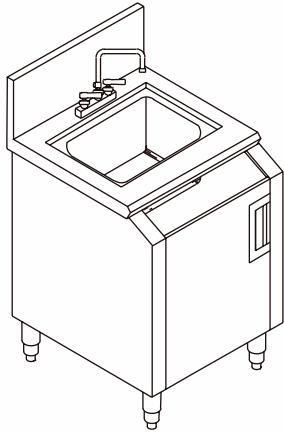


WASTE STATIONS

MODULAR COMPONENTS

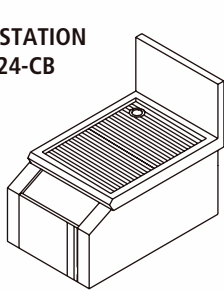
PROJECT _____

ITEM NO. _____

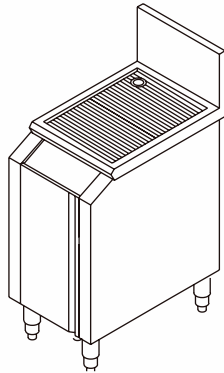


WET/DRY WASTE STATION
MODEL IWSD-24

WET/DRY WASTE STATION
MODEL IWSD-24-CB



DRY WASTE STATION
MODEL IDWD-14



DRY WASTE STATION
MODEL IDWD-14-CB



MODELS

DRY WASTE STATION

'S' SERIES 20.1/2" DEEP (with Corrugated Drainboard)

<u>Length</u>	<u>Model</u>
<input type="checkbox"/> 14"	IDWS-14
<input type="checkbox"/> 18"	IDWS-18
<input type="checkbox"/> 24"	IDWS-24

'D' SERIES 24" DEEP ((with Corrugated Drainboard)

<u>Length</u>	<u>Model</u>
<input type="checkbox"/> 14"	IDWD-14
<input type="checkbox"/> 18"	IDWD-18
<input type="checkbox"/> 24"	IDWD-24

WET / DRY WASTE STATION

'S' SERIES 20.1/2" DEEP (with Bowl & dry waste chute)

<u>Length</u>	<u>Bowl Size</u>	<u>Model</u>
<input type="checkbox"/> 14"	9" x 11" x 6"	IWSS-14
<input type="checkbox"/> 18"	9" x 11" x 6"	IWSS-18

'S' SERIES 24" DEEP (with Bowl & dry waste chute)

<u>Length</u>	<u>Bowl Size</u>	<u>Model</u>
<input type="checkbox"/> 14"	9" x 11" x 6"	IWSD-14
<input type="checkbox"/> 18"	9" x 11" x 6"	IWSD-18

STANDARD FEATURES

- All Heli-arc welded construction
- All 18 gauge type 304, 18/8 stainless steel
- Heavy duty stainless steel gussets welded to 14 gauge stainless steel channel supports
- Stainless steel adjustable bullet feet
- Attractive high polished bullnose edge to front
- Built in dry waste trash chute
- Drainboard top is continuous corrugation
- Drainboard has 4" wide 18 gauge type 304, 18/8 stainless steel support channels that run full length and depth of drainboards
- Drainboard is recessed and pitch to a 1" brass drain
- Door is double skin 18 gauge type 304, 18/8 stainless steel
- Door is mounted on heavy duty mullions with stainless steel pin hinges
- Attractive door pull
- Positive action door catches

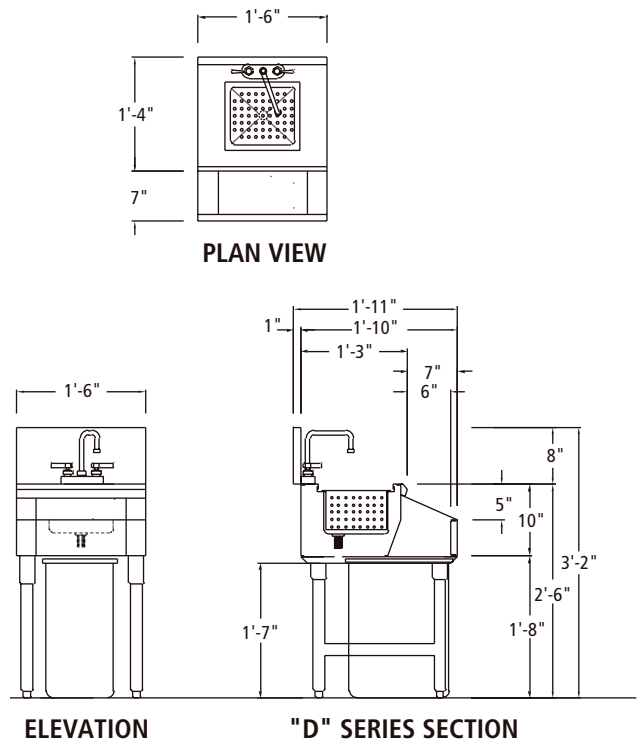
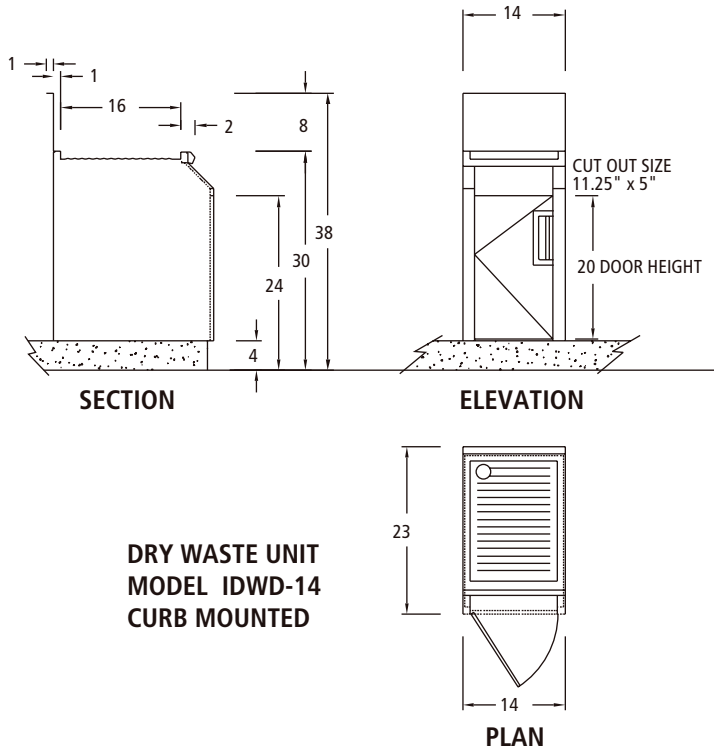
OPTIONS

- CB Cabinet Base
- TC Plastic Trash Can
- SD Soap Dispenser
- RP Removable Panel
- M Modified - Custom
- SBF Special Brand Faucet Available Upon Request



WASTE STATIONS

MODULAR COMPONENTS



WET/DRY WASTE UNIT

'S' SERIES 20.1/2" DEEP				
LENGTH	BOWL SIZE	MODEL No.	WEIGHT	CUBE
14"	9" X 11" X 6" DEEP	IWSS-14	48	7
28"	9" X 11" X 6" DEEP	IWSS-18	55	8

'D' SERIES 24" DEEP				
LENGTH	BOWL SIZE	MODEL No.	WEIGHT	CUBE
14"	9" X 11" X 6" DEEP	IWSD-14	48	7
28"	9" X 11" X 6" DEEP	IWSD-18	55	8

DRY WASTE UNIT

'S' SERIES 20.1/2" DEEP			
LENGTH	MODEL NO.	WEIGHT	CUBE
14"	IDWS-14	110	12
18"	IDWS-18	110	12
24"	IDWS-24	120	18

'D' SERIES 24" DEEP			
LENGTH	MODEL NO.	WEIGHT	CUBE
14"	IDWD-14	110	12
18"	IDWD-18	110	12
24"	IDWD-24	120	18

UTILITIES		
COLD WATER	HOT WATER	DRAIN
1 x 1/2" COLD	1 x 1/2" HOT	1 x 1.1/2"